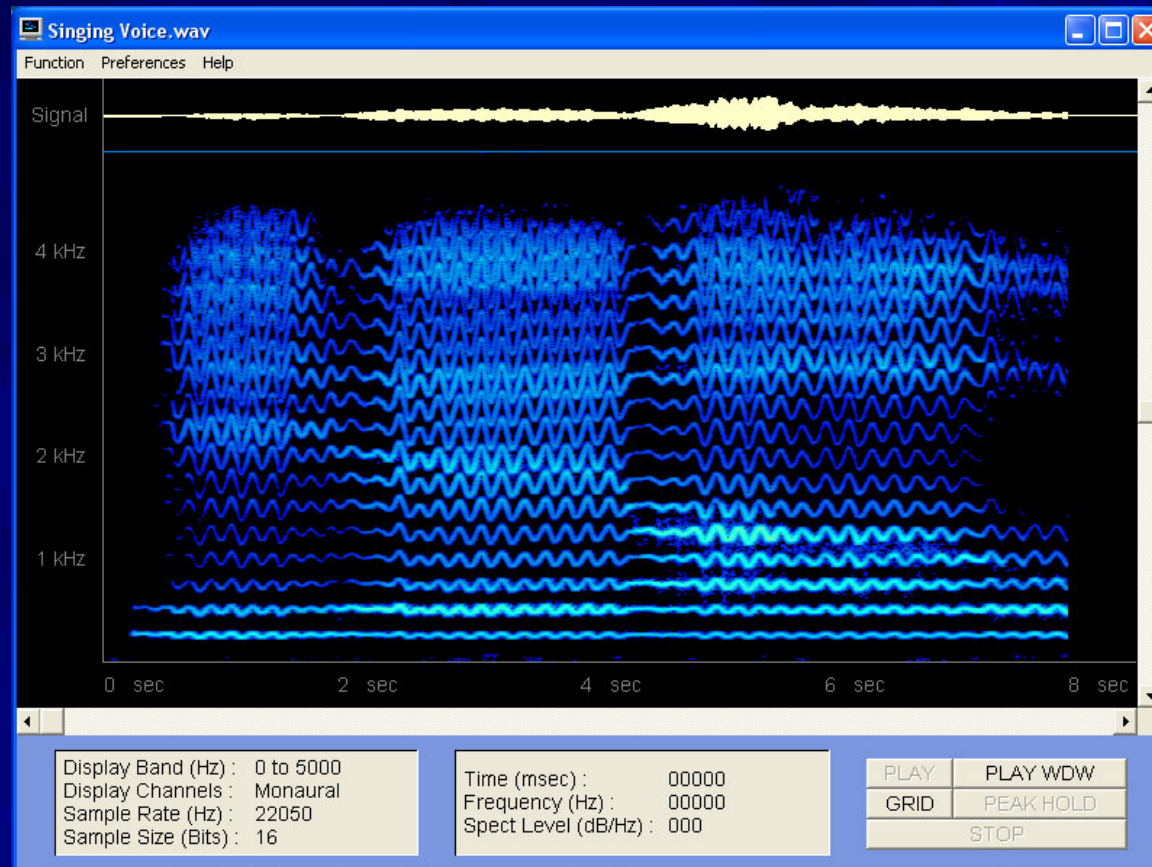


Sound Card and Volume Adjustment



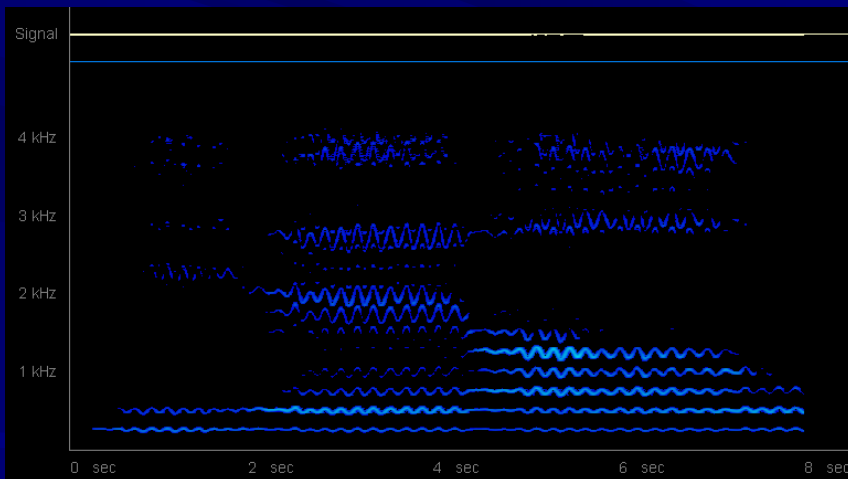
Quick Start instructions for sound card settings and volume adjustment

Quick Start Outline

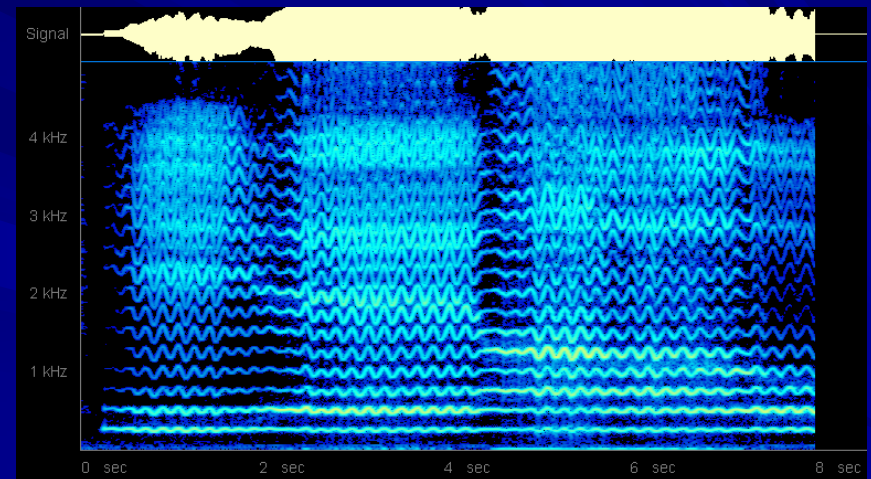
- ❑ Introduction
- ❑ Connecting the Microphone
- ❑ Using the Spectrogram Volume Control
- ❑ Windows Vista Sound Card Settings
- ❑ Windows XP Sound Card Settings

Introduction

- ❑ Microphone must be properly connected in order to record sounds.
- ❑ Spectrogram will not provide accurate or usable spectral information if recording volume is not properly adjusted.



Volume Too Low

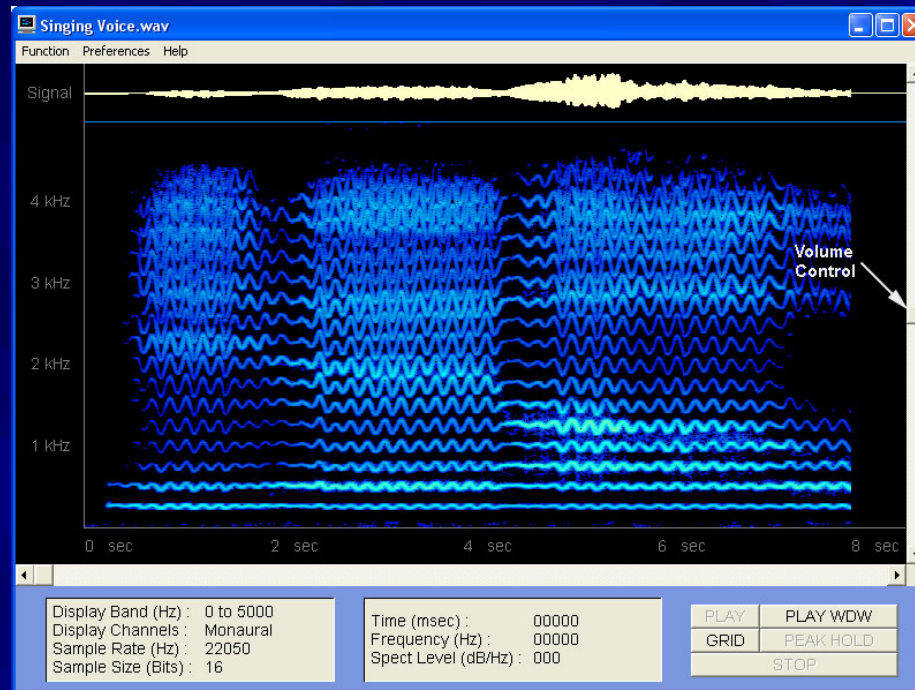


Volume Too High

Connecting the Microphone

- ❑ The microphone must be plugged into the correct input jack on the Windows sound card. Otherwise there will be no signal on the Spectrogram display.
- ❑ Sound cards may have several different input/output jacks such as
 - ❑ Microphone Input
 - ❑ Line/Auxiliary Input
 - ❑ Speaker Output
 - ❑ Digital Input/Output
- ❑ Check the sound card information to be certain that microphone is properly connected to the Microphone Input jack.
- ❑ On many sound cards, the Microphone Input jack is color-coded red or pink.

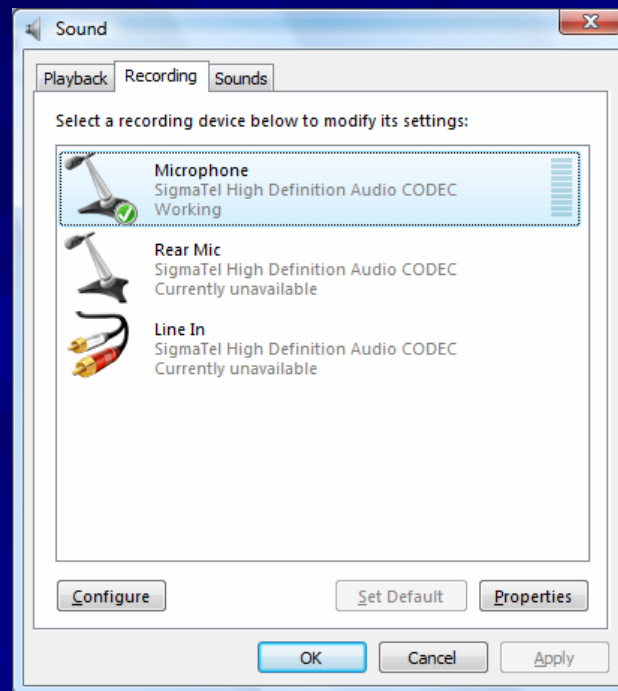
Using the Spectrogram Volume Control



- ❑ Use the Spectrogram Volume Control for fine volume adjustment during recording. Move the Spectrogram Volume Control up or down with the mouse.
- ❑ The maximum signal amplitude should fill about 3/4 of the height of the signal strip at the top of the display.

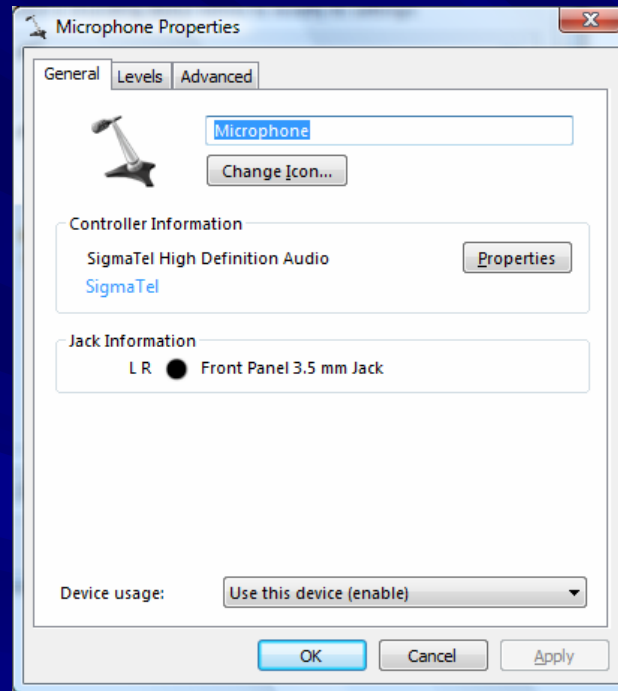
Windows Vista™ Sound Card Settings

- ❑ Select “Sound” from the Windows Vista Control Panel.
- ❑ Then click the “Recording” tab in the Sound control panel.



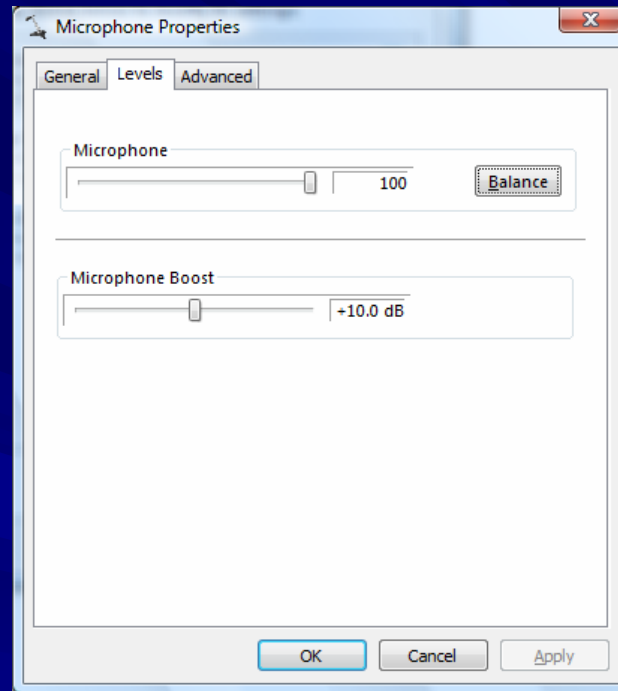
- ❑ Select “Microphone” (by blue highlighting), and then click the “Properties” button at lower right.

Windows Vista™ Sound Card (cont'd)



- ❑ Click the “General” tab in Microphone Properties.
- ❑ Make sure that “Device Usage” shows “Use This Device (enable).”

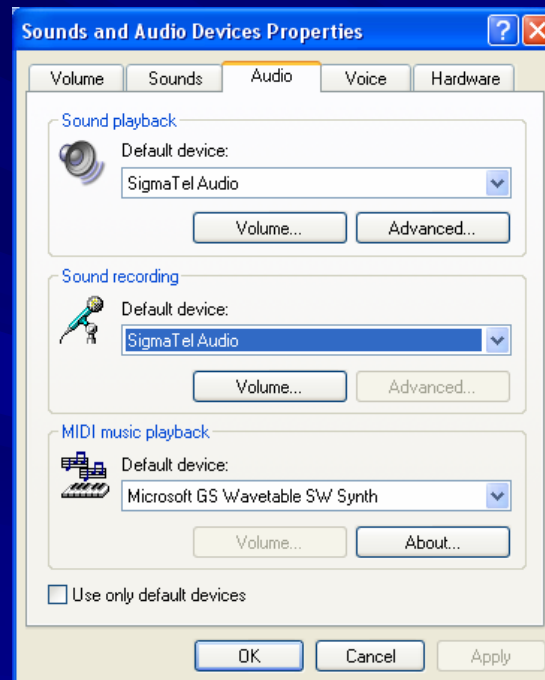
Windows Vista™ Sound Card (cont'd)



- ❑ Click the “Levels” tab in Microphone Properties.
- ❑ Set the Microphone Level between 75 and 100, and set the Microphone Boost between +10 and +20.

Windows XP Sound Card Settings

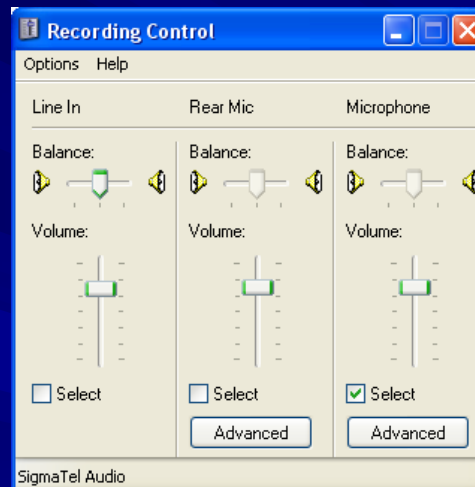
- ❑ Select “Sounds and Audio Devices” from the Windows XP Control Panel.



- ❑ Click the “Audio” tab, and set “Default Device” under both Sound Recording and Sound Playback to the proper sound card name.

Windows XP Sound Card (cont'd)

- ❑ Click the “Volume” button under Sound Recording to bring up the Recording Control.



- ❑ Place a check mark in the “Select” box under microphone, and set the microphone volume slider at about the 75% position.
- ❑ Click the “Advanced” button and set “Microphone Boost” at +20 dB.